



BHARAT ELECTRICAL PUMPS PVT LTD

Serving nation since 1937

LIKE

FATHER

like

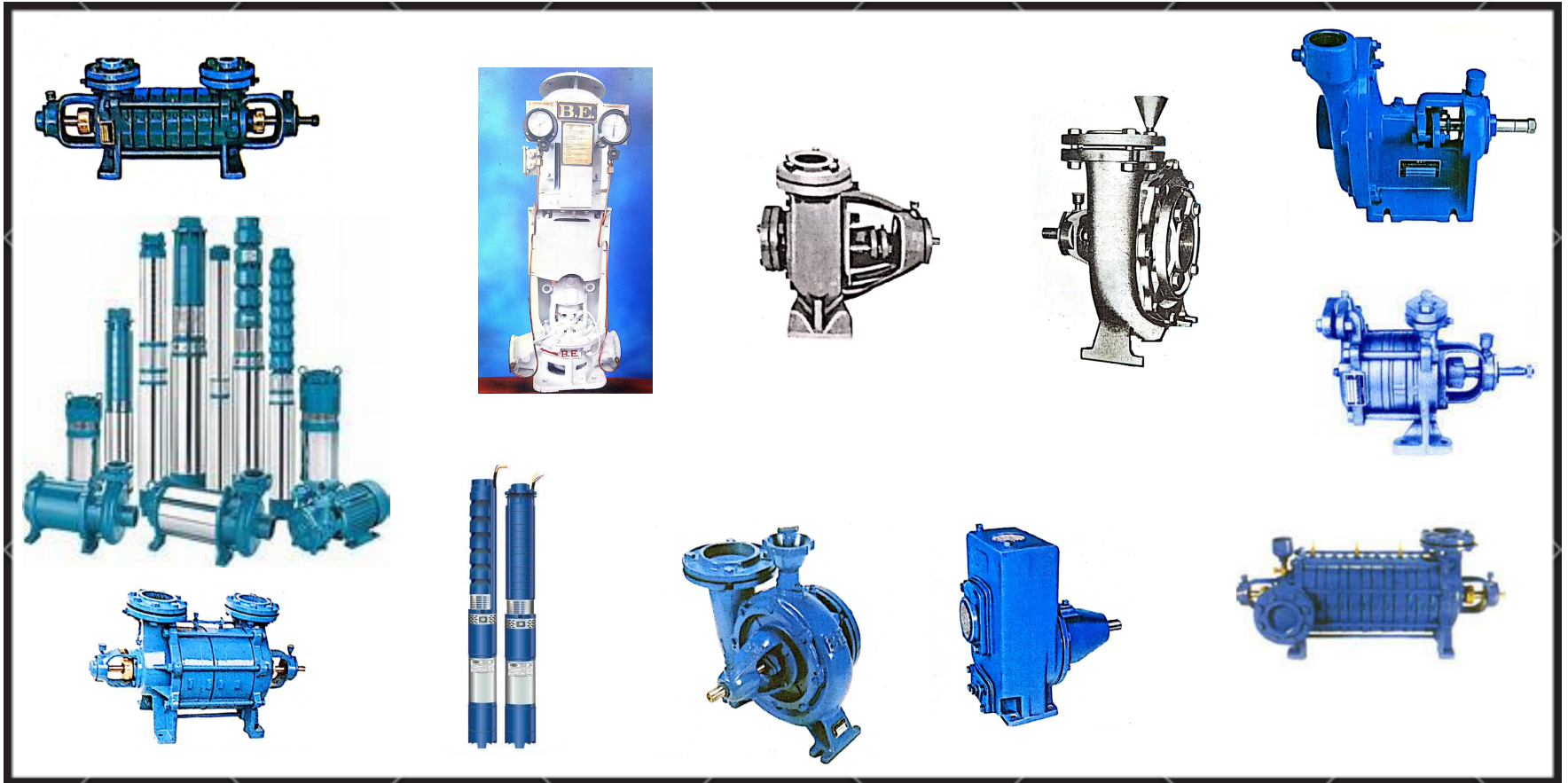
SON.....

THE PERFECT EVOLUTION

About Our company

B.E.

Since 1937, B.E. PUMPS Company has been at the forefront in developing innovative, high quality pumps. Recognized for its technical excellence, comprehensive customer support, and exacting manufacturing standards, B.E has become a global provider of highly reliable pumps and pumping systems. B.E has maintained the engineering edge in delivering technically superior pumps that result in lower install a B.E system, you're installing superb performance, unmatched quality and rock solid reliability. You're installing success. At B.E we build in quality with every step. Inside most B.E pumps, You'll find self-centering impellers to reduce ware and extend operational performance with reduced maintenance and lubrication. Some customers have had their B.E pumps continuous operation for over 85 years.



B.E.PUMPS MODELS

B.E.

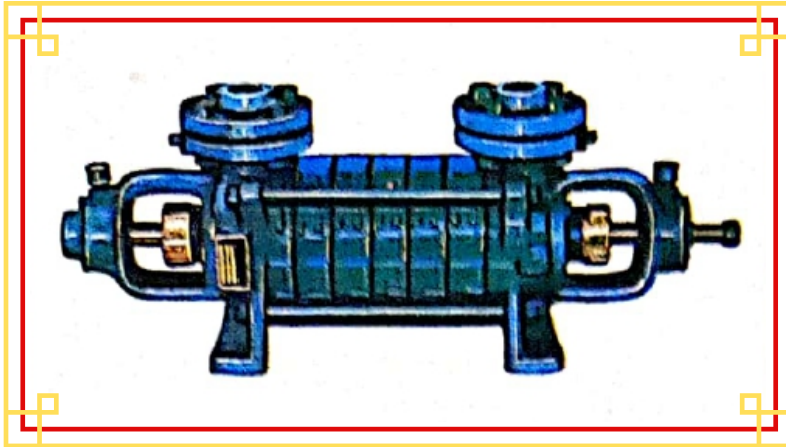
INDUSTRIAL:-

- 1. A & AO SERIES.**
- 2. M & MA SERIES.**
- 3. STS & SH SERIES.**
- 4. CM6 SERIES.**
- 5. ST & STD SERIES.**
- 6. MZ SERIES.**
- 7. D & DV SERIES.**
- 8. MB & CP SERIES.**
- 9. BV, SBV, MV, VR, SVR SERIES.**
- 10. BP SERIES.**
- 11. HA SERIES.**

DOMESTIC:-

- 1. SUBMERSIBLE PUMPS**
- 2. OPENWELL SUBMERSIBLEPUMPS**
- 3. MINI SELF PRIMING PUMPS**
- 4. SLOW SPEED SELF PRIMING PUMPS**
- 5. MONOBLOCK PUMPS**
- 6. HORIZONTAL PRESSURE BOOSTER PUMPS**
- 7. VERTICAL INLINE PUMPS**
- 8. HIGH/LOW HEAD PUMPS**

B.E.



TECHNICAL DATA

Capacity : Max. 880 L.P.M

Speed : 1450 R.P.M

Head : Max. 260 M.

Temperature : Max. 60°C for standard pump max. 100°C for hot water pump 'H'

FEATURES

- Horizontal lateral channel, self-priming design for continuous operation handling clear liquid free from any suspended.
- Suction and delivery branches are vertical and flanges are round. Counter flanges are provided with BSP thread.
- Grease lubricated ball bearing are provided.
- For special application mechanical seal can be fitted.

APPLICATION

- Transfer of liquid containing air or Gas
- Boiler feed
- Transfer of oil, Industrial water supply, sprinklers, car washing ect.
- Various marine applications

MATERIAL

Suction Cover

Delivery Cover

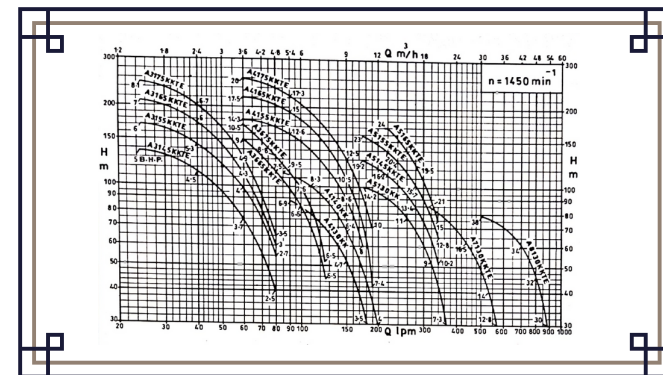
Intermediate Parts

IMPELLER

SHAFT

SHAFT SEALING

SPECIAL MATERIALS ALSO AVAILABLE



SELF PRIMING PUMPS

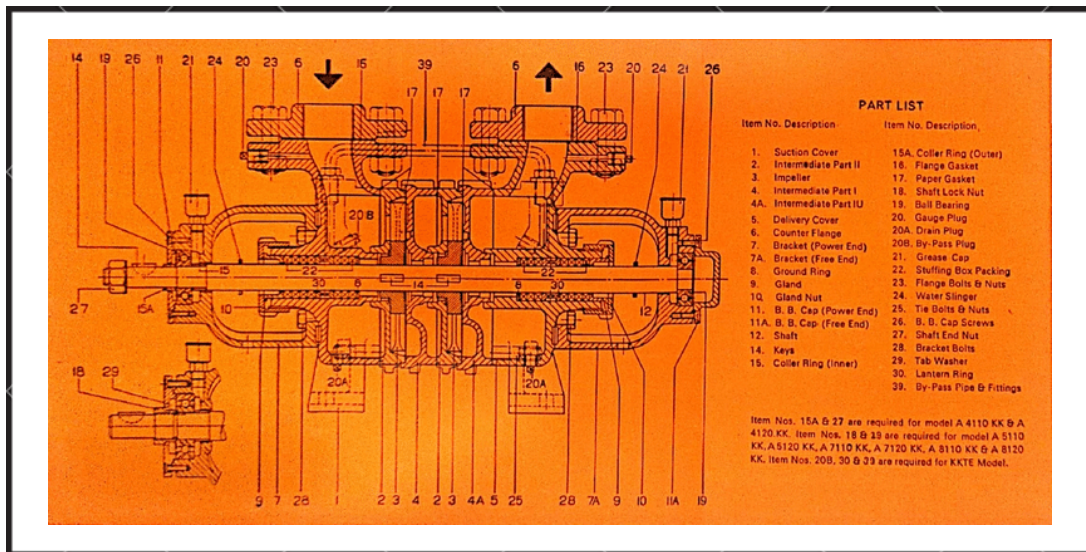
TYPE : 'A' HIGH HEAD

B.E.

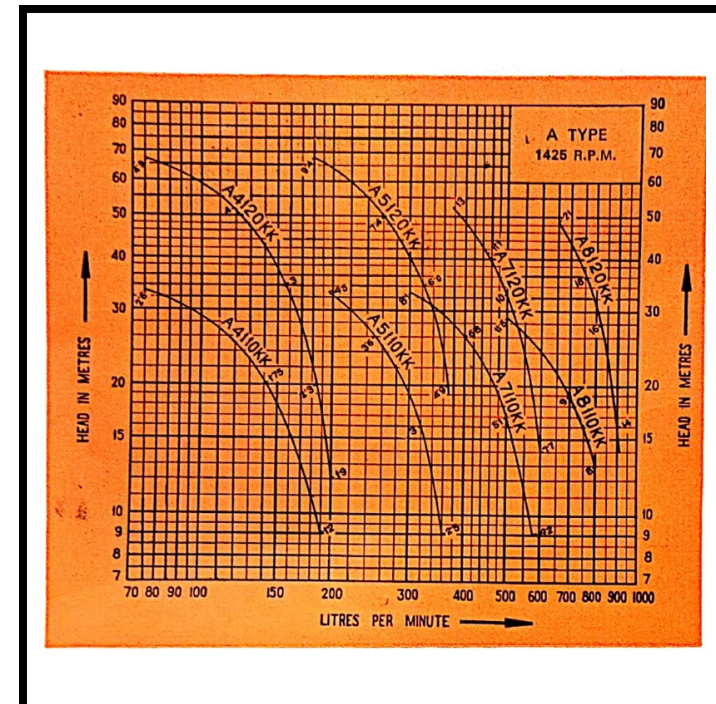
DESIGN

- KK - Stuffing box and ball bearing at both ends.
- TE - Stuffing box fitting with lantern ring the central space is connected by external pipe

These pumps are suitable for liquids with temperature upto 60°C . Pumps in construction 'h' are available for liquids with temperature between 60°C to 100°C.



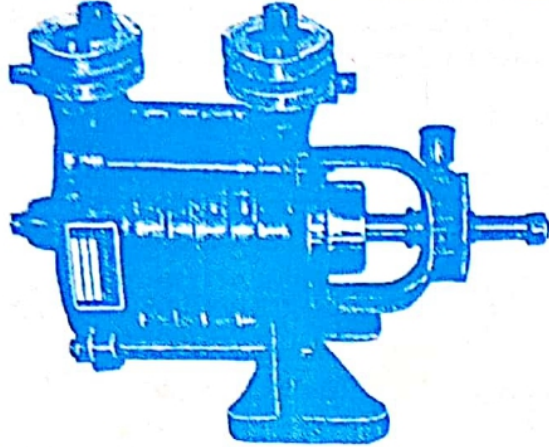
MODEL	A	B	C	D	E	F	G	H	I	K	L	M	N	O	P	Q	R	S	T	U	WT
A 4110 KK A 4120 KK	132	132	20	160	47	218	19	22	6	40	155 210	40	11	334 379	195	192	160 215	55	13	195 251	36Kg 43Kg
A 5110 KK A 5120 KK	140	150	20	160	47	218	22	25	6	50	170 245	40		353 428	209	209	185 250	55	13	221 296	46Kg 55Kg
A 7110 KK A 7120 KK	150	150	20	200	50	250	26	29	8	65	190 280	55		397 487	241	241	220 310	65	15	276 366	62Kg 74Kg
A 8110 KK A 8120 KK	175	170	20	200	50	250	32	35	8	80	256 366	79		456 566	256	256	235 345	65	15	291 401	92Kg 112Kg



SELF PRIMING PUMPS

B.E.

TYPE : 'AO' HIGH HEAD



APPLICATION

- Transfer of liquid containing air or Gas
- Domestic water supply
- Various marine application
- Refrigeration, Fuel Oil etc.

FEATURES

- Horizontal lateral channel, self-priming design for continuous operation handling clear liquid free from any suspended particle.
- Suction and delivery branches are vertical and flanges are oval. Counter flanges are provided with BSP thread.
- Pumps are providing with one grease lubricated ball bearing and one bush bearing flushed by liquid handled.
- For special application mechanical seal can be fitted.

TECHNICAL DATA

Capacity : Max. 130 L.P.M

Head : Max. 80 M.

Speed : 1450 to 1800 R.P.M

Suction Lift : Max 8M.

Temperature : Max. 60°C for standard pump max.
100°C for hot water pump 'H'

Rotation : Clockwise when looking from drive end
anti-clockwise in RR pump.

MATERIAL

Suction Cover

Delivery Cover

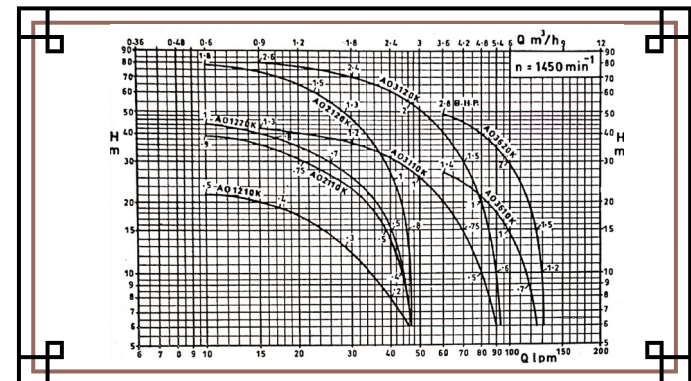
Intermediate Parts

IMPELLER

SHAFT

SHAFT SEALING

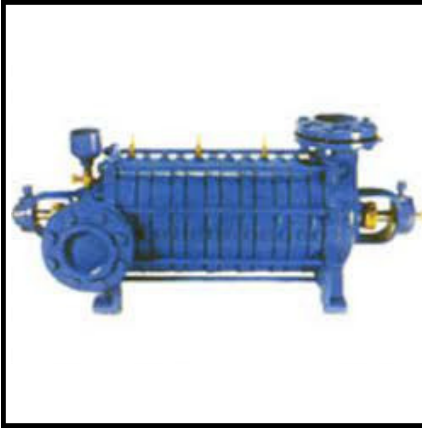
SPECIAL MATERIALS ALSO AVAILABLE



CENTRIFUGAL PUMPS

MODEL TYPE : 'M'

B.E.



DESCRIPTION

Pump type 'M' are horizontal, non-self priming centrifugal pumps. The pumps are built as single stage or multistage pumps upto 10 stages. Suction branch is horizontal and delivery branch in vertical. The intermediate parts are designed to lead the water from the outlet of one impeller to the inlet of the adjacent impeller the minimum of friction resulting in high efficiency of the pumps. The rotor of the pump is supported by antifriction bearings at both ends except for pump series M 450K in which rotor is supported antifriction bearing at the drive end and bush bearing at the free end. Antifriction bearings are grease lubricated. Pumps are provided with stuffing box packing. Depending upon the application Mechanical seal can also be fitted.

STANDERD OF MATERIAL OF CONSTRUCTION

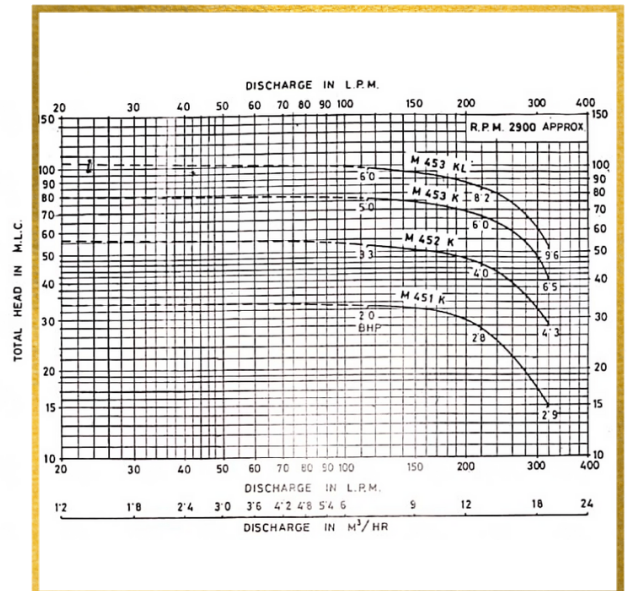
- Casing - Close grained cast iron
- IMPELLER - Close grained cast iron
- SHAFT - Stainless steel
- SPECIAL MATERIALS ALSO AVAILABLE

TECHNICAL DATA

- Discharge indicated in curves applies to liquid at barometric height of 760mm mercury and at a temperature 30°C .
- BHP indicated in curves is for specific gravity of 1.0 and viscosity cSt.
- Direction of rotation is clockwise seeing from the drive end.
- Maximum permissible speed is 1800 R.P.M. for all pumps except M 450K for which maximum permissible speed is 3000 R.P.M.
- Before starting, valve on suction side must be fully opened and valve on delivery side closed
- Before starting the pump it must be filled with liquid to ensure priming.
- Tolerance on discharge is $\pm 10\%$ at rated head and rated R.P.M.
- No subsequent external priming is necessary.

APPLICATION

1. Industrial
2. Marine
3. Refrigeration
4. Fuel Oil
5. Fire fighting
6. Pressure boosting
7. Sprinkler Irrigation
8. Minning etc..



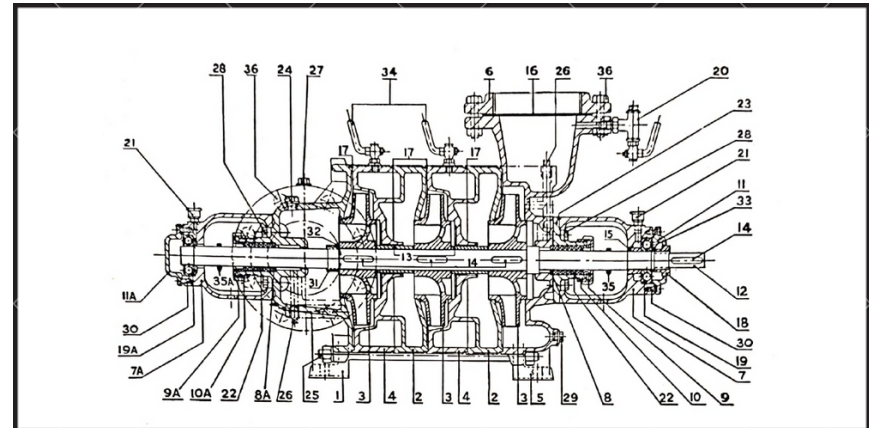
CENTRIFUGAL PUMPS

MODEL TYPE : 'M'

B.E.

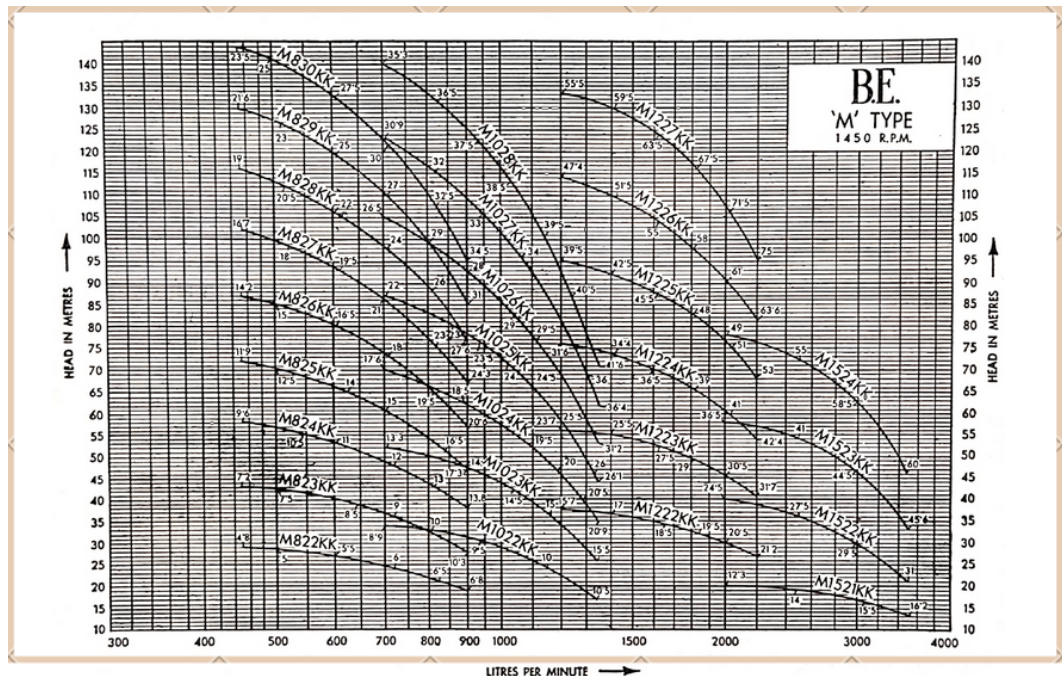
APPLICATION

Mining-Irrigation-Water Works
Boosting Pressure in Water Mains



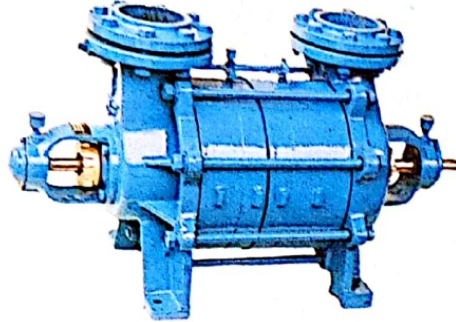
size 80 X 80 to 150 X 150 mm

LIST OF COMPONENTS	
ITEM NO. DESCRIPTION	ITEM NO. DESCRIPTION
1 Suction Cover	18 Shaft Lock Nut
2 Intermediate Part II	19 Ball Bearing (Power End)
3 Impeller	19A Ball Bearing (Free End)
4 Intermediate Part I	20 Air Release Cock
5 Delivery Cover	21 Grease Cup
6 Counter Flange	22 Graphite Packing
7 Bracket (Power End)	23 Extension Piece for Delivery Cover
7A Bracket (Free End)	24 Plug
8 Ground Ring (Power End)	25 Tie Bolts with Nuts
8A Ground Ring (Free End)	26 Plug
9 Gland (Power End)	27 Plug
9A Gland (Free End)	28 Bracket Bolts
10 Gland Nut (Power End)	29 Plug
10A Gland Nut (Free End)	30 B. B. Cap Screws
11 B. B. Cap (Power End)	31 Impeller Lock Nuts
11A B. B. Cap (Free End)	32 Tab Washer
12 Shaft	33 Tab Washer
13 Distance Piece	34 Air Cock
14 Key	35 Water Slinger (Power End)
15 Collar Ring	35A Water Slinger (Free End)
16 Rubber Insertion	36 Counter Flange Bolts
17 Paper Joint	



B.E.

- 1.Industrial
- 2.Transfer of liquid containing air & gas
- 3.Marine
- 4.Refrigeration
- 5.Fuel Oil
- 6.Water works
- 7.Fire fighting
- 8.Pressure boosting etc..

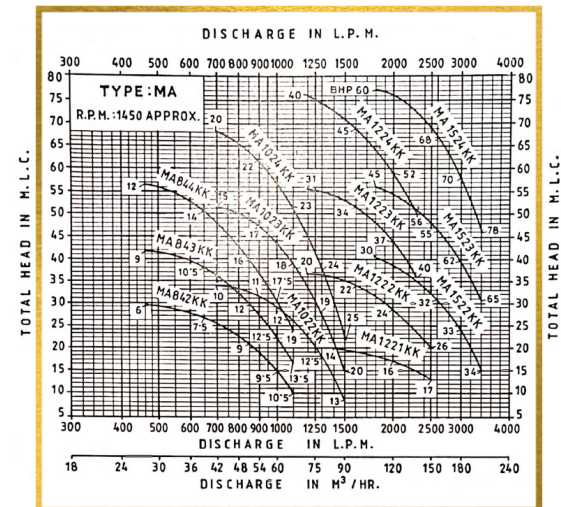


- Discharge indicated in the water at barometric height of 760mm mercury and at a temperature 30°C .
- Power indicated is that absorbed at the pump shaft when pumping liquids having specific gravity of 1.0 and viscosity cSt.
- Direction of rotation is clockwise seeing from the drive end. Reverse rotation also available on request
- Maximum permissible speed is 1800 R.P.M.
- Maximum suction lifts is 7 mtrs. Depending upon the duty point. Capacity reduces over 4 mtrs. Suction lifts.
- Before starting the pump for the first time it must be filled with liquid to ensure priming.
- No subsequent external priming is necessary.

Pump type 'MA' are horizontal, centrifugal self priming pumps with built in deaerating lateral channel stage. Both suction and delivery branches are vertical so that liquid remains inside the pump even when the pump is switched off. this ensures priming of the pump. the rotor of the pump is supported by antifriction bearing at both ends. these bearing are grease lubricated. the pumps are provided with stuffing box packing. Depending upon the application mechanical seal can also be provided. Pump type 'MA' are designed for continuous operation handling only clear liquid free from any suspended particles.

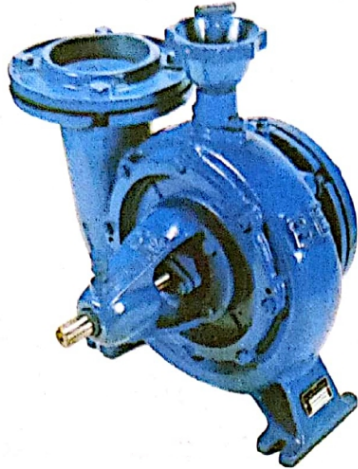
Close grained cast iron (Casing)
Intermediate Parts
IMPELLER
SHAFT
SHAFT SEALING

SPECIAL MATERIALS ALSO AVAILABLE



SINGLE STAGE CENTERIFUGAL MIXED FLOWPUMP B.E.

MODEL TYPE : 'CM6'



APPLICATION

1. Agriculture
2. Irrigation
3. Raw water from river and cannel
4. Dewatering
5. Prawn culture etc..

DESCRIPTION

Pump type 'CM 6' are horizontal, Single stag priming pumps with end suction and vertical delivery. the rotate of the pump is supported on one end with a pair of antifriction bearing and other end with a bush baring. impeller is provided with back ribs for balancing axial thrush. Axial location of impeller can be adjusted by bearing cover the pump can be easily dismantled for inspection/repair without disturbing pipe connections. Direction of rotation is clockwise when seen from drive end. Also available reverse rotation pump with rotation anti-clockwise with different impellers to suit 12.5HP, 15 HP and 20 HP motors. Performance tolerance is as per IS 1937 Class C.

STANDERD OF MATERIAL OF CONTRUCTION

Close grained cast iron (Casing)

Intermediate Parts

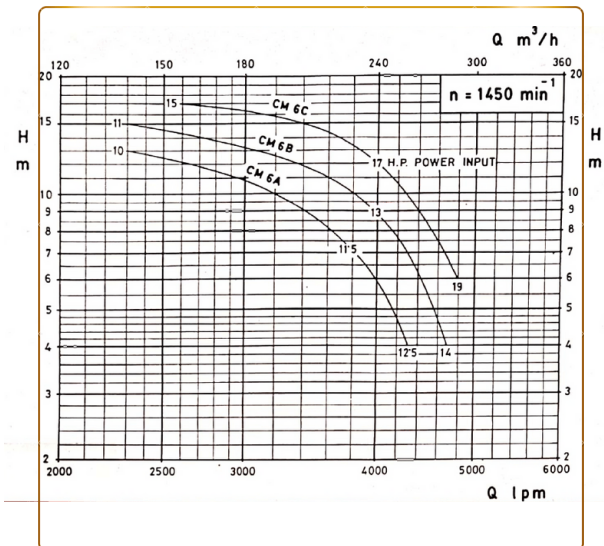
IMPELLER

SHAFT

SHAFT SEALING

SPECIAL MATERIALS ALSO

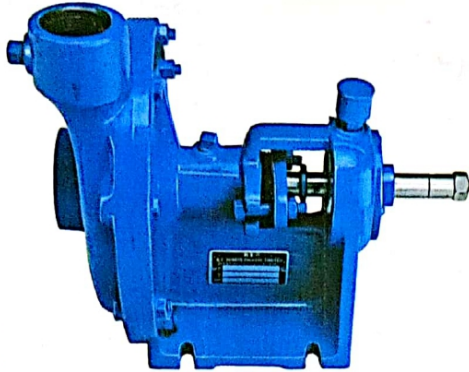
AVAILABLE



NON-CLOGGING CENTRIFUGAL PUMP

MODEL TYPE : 'ST'

B.E.



DESCRIPTION

Pump type 'ST' are horizontal, Single stag centrifugal pumps for pumping reasonable clear or slightly muddy water. Pumps are very compact and of sturdy construction. Pumps suction branch is axial and delivery branch vertical. Impeller has three semi-open vanes which permit passage of suspended particles of max. size 5 to 8 mm. The pump is provided with one bush bearing and one ball bearing. Ball bearing is lubricated by grease. The pumps are provided with gland packings. Pumps can be fitted with stainless steel wearing plants on request. Direction of rotation is clockwise looking from drive end.

TECHNICAL DATA

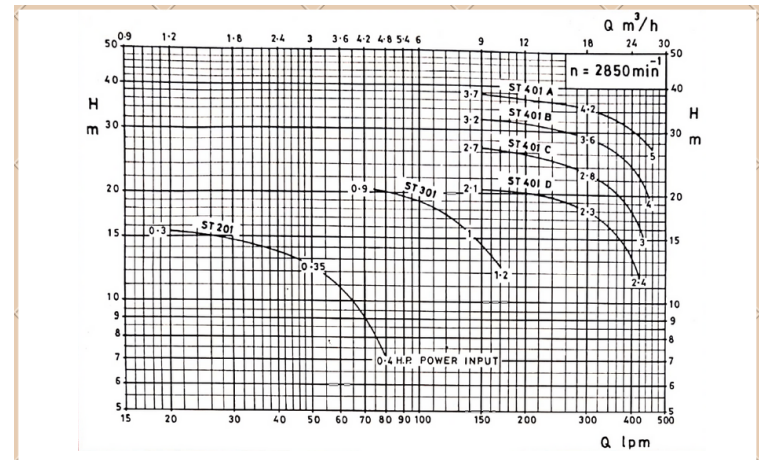
- Performance tolerance is as per IS 9137 Class C.
- Capacity applies to liquid at barometric height of 760mm mercury and at a temperature of 30°C.
- Input powers indicator for specific gravity of 1.0 & viscosity of 1 cSt.
- Maximum permissible speed is 3000 R.P.M.

STANDARD OF MATERIAL OF CONSTRUCTION

- Close grained cast iron (Casing)
- Intermediate Parts
- IMPELLER
- SHAFT
- SHAFT SEALING
- SPECIAL MATERIALS ALSO AVAILABLE

APPLICATION

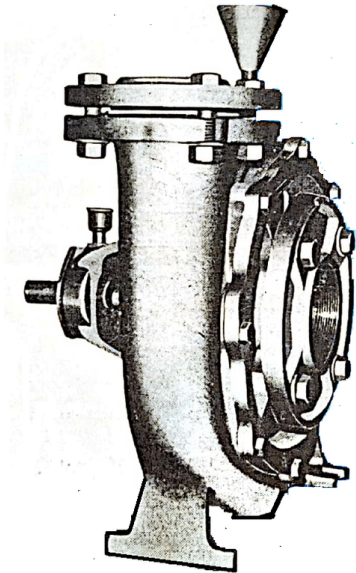
- Sewage and Drinage
- Effluent disposal
- Industrial processing water
- Raw water from Rivers and Canals, etc.



AGRICULTURE PUMPS

MODEL TYPE : 'STD'

B.E.



DESCRIPTION

- Single Stage centrifugal pumps suitable for both engine and motor drive.
- Other than for agriculture these pumps are also suitable for industrial use.

STANDERD OF MATERIAL OF CONTRUCTION

- Close grained cast iron (Casing)
- Intermediate Parts
- IMPELLER
- SHAFT
- SHAFT SEALING
- SPECIAL MATERIALS ALSO AVAILABLE

SPECIAL FEATURES

- Robust Construction
- High Efficiency
- Low Power Consumption
- Longer Life
- Easy Handling
- Portability

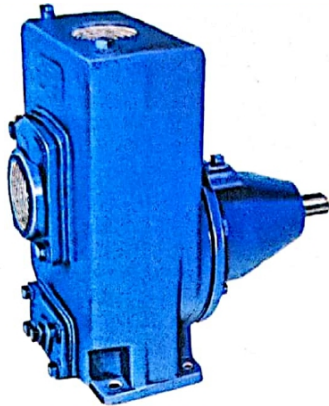
APPLICATION

- Agriculture
- Shallow Tubewells
- Deep Tubewells
- Open Wells.
- Reservoirs.
- Rivers etc..

CENTRIFUGAL SELF PRIMING PUMPS

MODEL TYPE : 'SH'

B.E.



TECHNICAL DATA

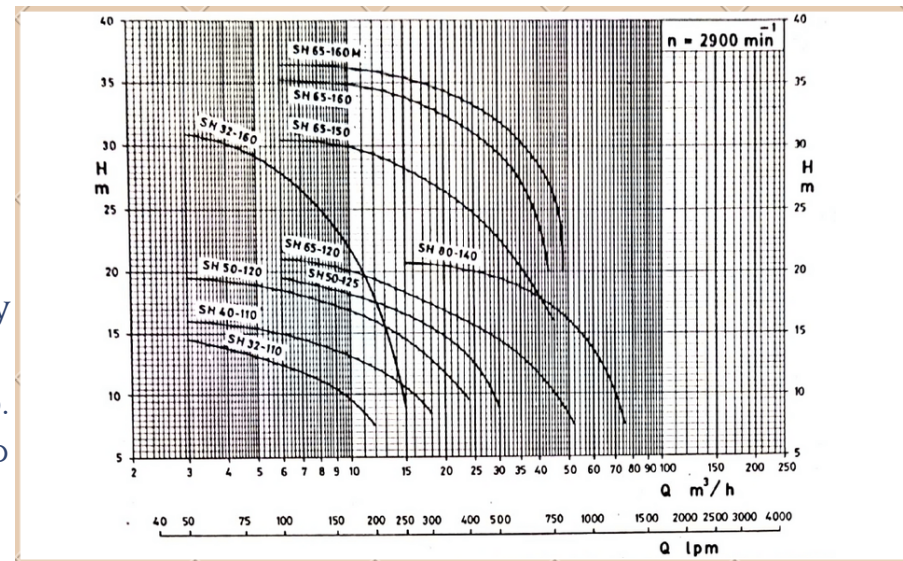
Capacity	: Max. 75 M ³ /Hr
Head	: Max. 36 M.
Speed	: Max 2900 to 3600 R.P.M
Suction Lift	: Max 8M.
Temperature	: Max. 60°C
Rotation	: Clockwise when looking from drive end.

APPLICATION

- Drainage and irrigation
- Sewage and effluent treatment plant
- Construction sites
- Transfer of oil & petrol
- Various marine applications like general service fire fighting, Bilge etc..

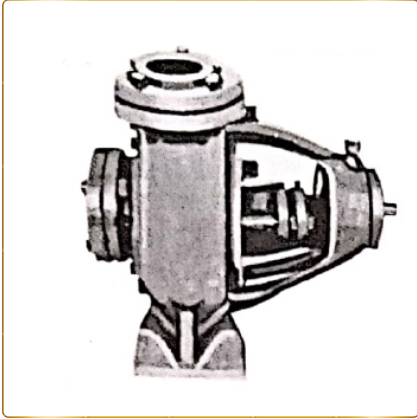
FEATURES

- Suitable for handling liquids containing solid particles.
- back pull out design.
- Fitted with two ball bearing with grease packed for life.
- Fitted with mechanical seal which cannot run dry because of oil reservoir in pump.
- Prior to commissioning liquid is filled in the pump. After shut down enough liquid remains in pump to prime again.
- Priming time minimum.



NON-CLOGGING PUMPS

MODEL TYPE : 'MZ'



TECHNICAL DATA

Capacity	: Max. 1600 L.P.M
Head	: Max. 21 M.
Speed	: 1450 to 1800 R.P.M
Temperature	: Max. 80°C.
Rotation	: Clockwise when looking from drive end

STANDARD OF MATERIAL OF CONSTRUCTION

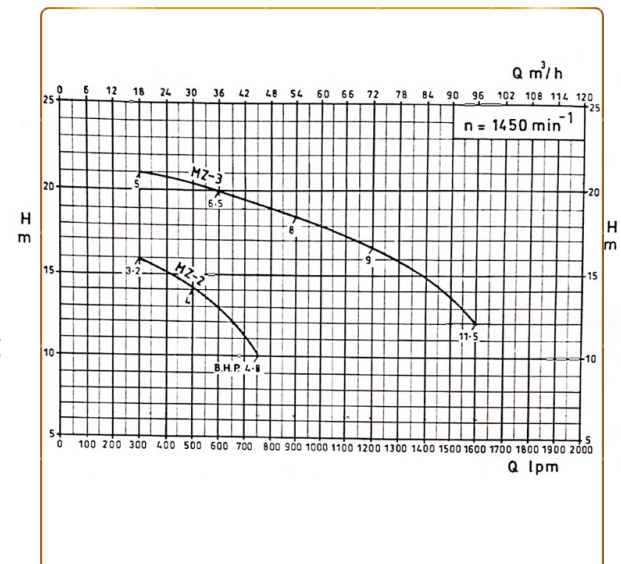
- Close grained cast iron (Casing)
- Intermediate Parts
- IMPELLER
- SHAFT
- SHAFT SEALING
- SPECIAL MATERIALS ALSO AVAILABLE

APPLICATION

- Sewage and drainage
- Solid handling
- Agriculture
- Water supply and pressure boosting

FEATURES

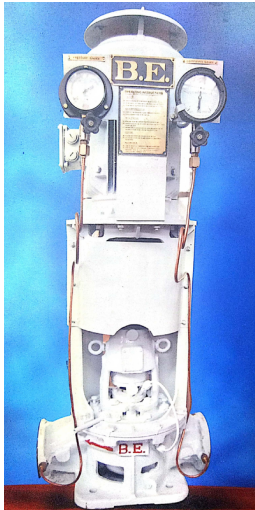
- Horizontal, Single Stage, Centrifugal pump with robust construction.
- Suitable for handling slurries containing suspended particles of max. size 25mm.
- Provided with grease lubricated ball bearings.
- Provided with wearing plates.



VERTICAL CENTRIFUGAL PUMPS

B.E.

MODEL TYPE : 'BV'

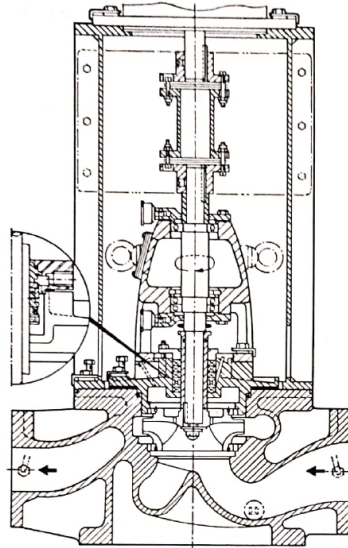


TECHNICAL DATA

Capacity	: 5-400 M ³ /HR
Head	: 3-140 M.L.C
Speed	: 1450 to 2900 R.P.M (50 Hz)1750 and 3500 R.P.M. (60 Hz)
Rotation	: Clockwise when looking from drive end

OPTIONAL FEATURES

The pumps can be fitted with a separate priming unit for an automatic cut-in and cut-out operation with the help of a pressure switch and a specially designed combined starter



DESCRIPTION

Pump type 'BV' are vertical radially split single stage in-line centrifugal pumps specially designed for merchant marine and naval applications. These pumps are fitted with grease lubricated ball bearings and can be supplied with spacer type flexible coupling for back pull out execution or standard flexible coupling for compact execution. The pumps are also available in Monoblock design. These pumps can be floor-mounted, mid-mounted or wall-mounted as per requirement.

MATERIALS

Casing	: Cast Iron/Gunmetals
Impeller	: Gunmetal/Ni. Al. Bronze
Shaft	: Ni. Cr Stainless Steel
Wearing Rings	: Lead Bronze/Phos. Bronze
Sealing	: Gland Packing/Mechanical Seal
Other materials also available on request.	

APPLICATION

- General Service
- Fire Fighting
- A. C. Chilled Water Circulating
- Transfer of Fresh Water and Sea Water
- Transfer of White Oil, Light Lub Oil, Disel Oil etc..

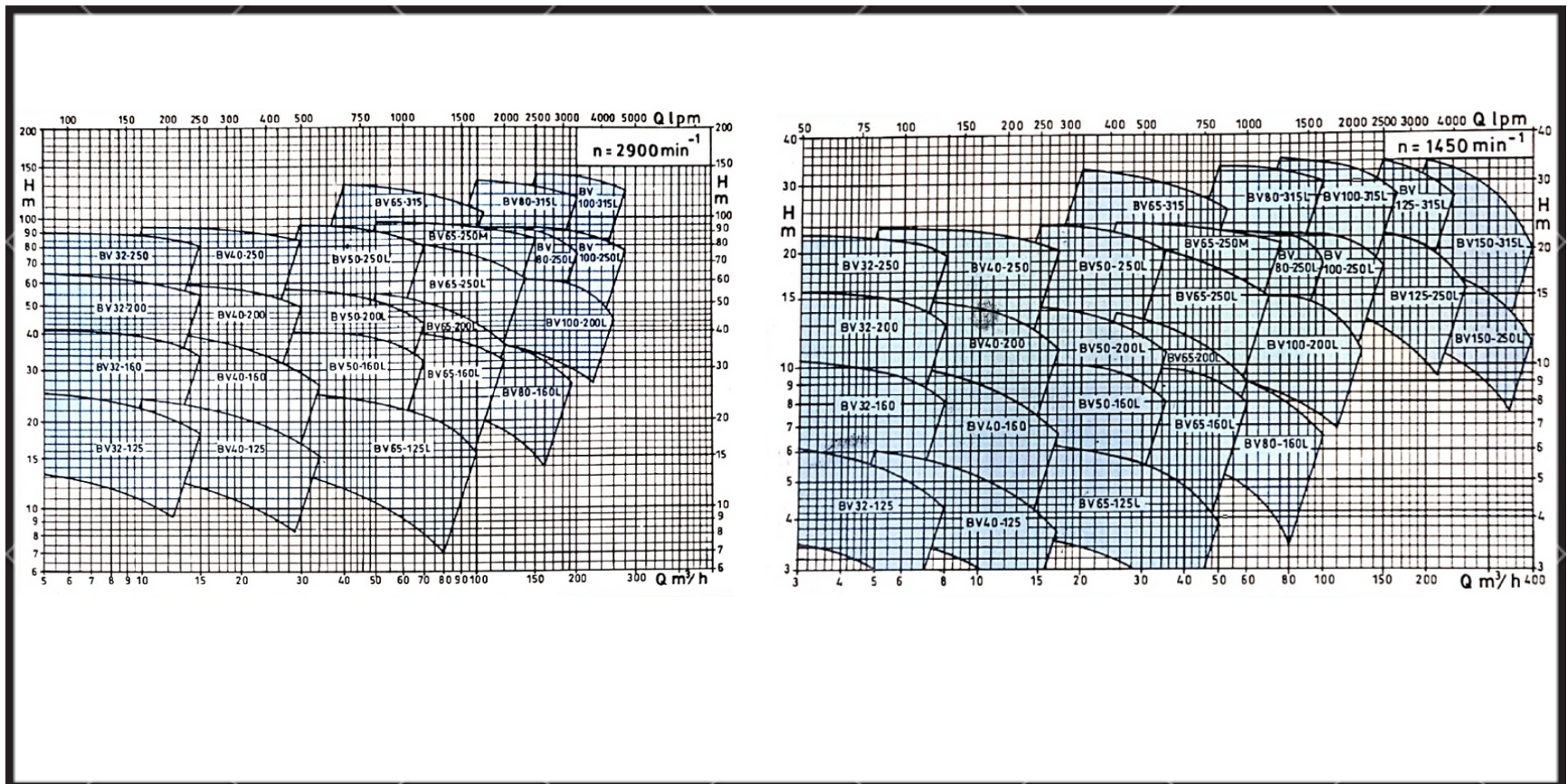
VERTICAL CENTRIFUGAL PUMPS

B.E.

MODEL TYPE : 'BV'

QUALITY ASSURANCE

- 'BV' pumps meet the requirements of ABS, BV, DNV, IRS, LRS and other Marine Classification Societies.
- These pumps are also available in special to meet the stringent Indian and Admiralty Shock Grand, Anti-Vibration and low Noise requirements for Naval applications.
- Our Manufacturing Facilities and Quality Assurance System are approved by Director General of Quality Assurance, Ministry of Defence, Government of India.



B.E.[®]

B.E.

B.E. PUMPS PRIVATE LIMITED

DELIVERY PROGRAMME FOR STANDARD PUMPS

PUMP TYPE	MAX. CAPACITY (M ³ / HR.)	MAX. HEAD (M.W.C.)	DOMESTIC WATER SUPPLY	DOMESTIC WATER SUPPLY WITH DEEP SUCTION DEVICE	HOT WATER SERVICE	WATER SUPPLY AND PRESSURE BOOSTING	SEWAGE AND DRAINAGE	BOILER FEED	CHEMICAL	AGRICULTURE	SPRINKLER IRRIGATION	BILGE, BALLAST, GENERAL SERVICE ETC. FOR MARINE USE	FIRE FIGHTING	MINE	SOLID HANDLING	L.P.G., AVIATION FUEL	TRANSFERRING AND UNLOADING OF FUEL OIL	RAW WATER FROM RIVER AND CANAL DEWATERING	REFRIGERATION	HYDROPHORE PLANT
A, AO	54	260	✓	✓	✓	✓		✓	✓			✓	✓			✓	✓		✓	✓
D, DV	13	60	✓		✓															
M	360	153				✓				✓	✓		✓	✓		✓	✓	✓	✓	
MA	204	78	✓			✓						✓	✓			✓	✓		✓	
CM6	288	17								✓	✓							✓		
ST	28	38					✓		✓	✓								✓		
STD	122	21				✓				✓								✓		
MZ	90	21				✓	✓			✓					✓			✓		
STS, SH	75	36					✓				✓	✓	✓			✓	✓	✓		
MB, CP	4	20	✓																	
BV, SBV, MV, VR, SVR	400	140										✓	✓						✓	
BP	400	110				✓			✓			✓							✓	
HA	1350	140											✓	✓				✓		

SPECIALLY DESIGNED PUMPS ON REQUEST

SUBMERSIBLE PUMPS

B.E.

V4 & V7 SUBMERSIBLE PUMPS:

PRODUCT SPECIFICATIONS:

- Impellers-Poly Nory with wear-resistant inserts
- made of SS
- Diffusers - Poly Nory with SS, free flow vanes
- to reduce friction
- Casting are of SS tube to ensure longer life
- V5 & V6 Submersible Pumps :
- Discharge casing - Graded C.I Impellers - Steel
Cast / AISI 304 / AISI 410
- Diffusers - C.I.
- Bowl - Graded C.I.
- Pump shaft- AISI 304
- The pump shaft sleeves and couplings are of
- stainless steel

Power Range: I Phase 0.5 HP to 3.0 HP 240V, 50Hz A.C

Speed: 2880 rpm

Discharge Range: 16 Lpm to 400 Lpm

Total Head Range: 6 Metres to 240 Metres Delivery Pipe Size in mm: 25mm, 40mm, 50mm

Power Range: 3 Phase 0.5 HP to 7.5 HP 415V, 50Hz, A.C.

Speed : 2880 rpm

Discharge Range: 16 Lpm to 400 Lpm

Total Head Range: 6 Metres to 240 Metres Delivery Pipe Size in mm: 25mm, 40mm, 50mm

APPLICATIONS:

- Domestic and industrial water supply
- Fire Fighting systems for small and medium size plants
- Sprinkler and drip irrigation systems
- Booster systems
- Farm houses, nurseries and gardening



2. OPENWELL SUBMERSIBLE PUMPS

APPLICATIONS

- Domestic use in Apartments, Buildings and Hotels • Agricultural use
- Small farms and Gardening • Irrigation
- Water supply for fountains
- Overhead tanks and sumps

SINGLE PHASE OPENWELL

Power Range: 0.37-0.75 kw (0.5-1.0 HP) 240V, 50Hz, A.C.,
 Speed : 2880 rpm (SINGLE PHASE).
 Discharge Range : 20 Lpm to 42 Lpm
 Total Head Range : 6 Meters to 30 Meters
 Pipe Size in mm (Suction x Delivery): 25 x 25
 Sealing : Mechanical Seal

THREE PHASE OPENWELL

Power Range :3.0 HP to 15.0 HP/5.0 HP to 20.0 HP
 440V, 50Hz, A.C., 3 Phase
 Speed : 2880 rpm: 300 Lpm to 2000 Lpm
 Discharge Range: 10 to 70 Meters / 20 to 90 Meters
 Total Head Range Delivery Pipe size in
 mm:50mm,65mm,75mm



2. MINI SELF PRIMING PUMPS

The motor body is made of quality extruded aluminum and Dynamic balancing of Rotor assembly enables long life. Pump consists of brass impeller, cast iron pump casing. It is suitable for domestic uses.

Power1 Range: 0.5 HP 240V, 50Hz, A.C.,

single

Phase

Speed :2880 rpm.15 Lpm to 40 Lpm

Discharge Range: 6 Meters to 50 Meters

Total Head Range: 25 x 25

Pipe Size in mm (Suction x Delivery)

Suction lift Capacity with foot valve: 7 Mtrs

Sealing : Mechanical Seal



3. SLOW SPEED SELF PRIMING PUMPS

It is used in Hotels, Clubs, Flats, Bungalows, Hospitals, Garages, Dairies, Gardens.

Power Range:0.5HP&1.0HP 240V,50Hz,

A.C.,I Phase Speed

Speed: 1440 rpm

Discharge Range:18 Lpm to 50 Lpm

Total Head Range: 6 Meters to 36
Meters

Pipe Size in mm(Suction x
Delivery):25x25

Suction lift Capacity with foot
valve:7mtrs

Sealing: Mechanical Seal



5. MONOBLOCK PUMPS

B.E.

These pumps are used mainly for agriculture uses and also for Drip & Sprinkler irrigation, Public water supply, Industrial applications and water circulation applications.

Power Range: 0.5HP & 2.0HP 240V,

50Hz, A.C., 1 Phase Speed

Speed : 2880 rpm

Discharge Range: 33 Lpm to 900 Lpm

Total Head Range: 6 Mtrs to 28 Mtrs

Pipe Size in mm (Suction x Delivery):

25 X 25, 32 X 25, 40 X 40, 50 X 40, 50 X

50, 65 X 50, 75 X 65, 75 X 75

Suction lift Capacity with foot valve: 7 Mtrs

Sealing: Mechanical Seal



6. HORIZONTAL PRESSURE BOOSTER PUMPS

APPLICATION:-

- Residential / Commercial Purpose
- Pressurized water supply
- Fountains/Gardens
- Water Treatment & Purification
- Boiler Feed
- Car wash/shower panels

CONSTRUCTION/FEATURES:-

- SS 304 Impeller and Diffusers
- Suction and Delivery casing - Cast Iron with ED coating
- Thermal Protector
- Stainless steel 410 shaft
- Low power consumption
- Graphite ceramic mechanical seal
- Automatic ON/OFF



B.E. PUMPS PVT LTD

B.E.

"We are grateful for being our loyal customer."



B.E.

**LET'S
CONNECT !!**

BHARAT ELECTRICAL PUMPS PVT LTD

**Address : Plot No. 109, D-Block, Autonagar,
Gajuwaka, Visakhapatnam,
Andhra Pradesh, India Pincode-530012**

**For Support : Support@bepumps.com
: bepumpsvizag@gmail.com**